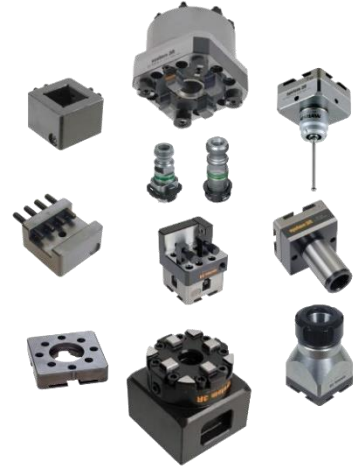


CLAMPING SYSTEM – SYSTEM 3R

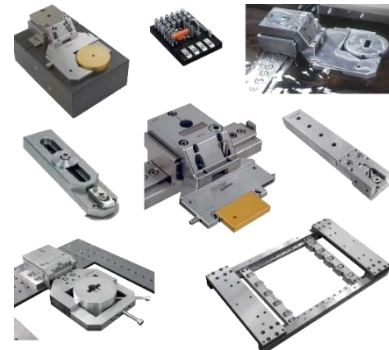
Clamping system for die-sinking EDM and clamps for electrode production

- Macro Junior and Macro Combi (2,8MB)
- Macro Standard and Macro High Performance (4,9MB)
- Macro Nano (1,4MB)
- Macro Magnum (2,3MB)
- Matrix (1,6MB)
- GPS240 (2,6MB)
- Dynafix (1,8MB)
- Maxi (1,4MB)
- Mini (1,9MB)
- 3Refix (1,1MB)
- Delphin and Delphin Big (1,6MB)



[Click on the picture to download full catalog \(10,3MB\)](#)

Clamping system for WEDM (7,1MB)



[Click on the picture to download full catalog \(7,1MB\)](#)

Clamping system for chip removal production

- Macro (3,5MB)
- Macro Standard and Macro High Performance (4,9MB)
- Macro Nano (1,4MB)
- Macro Magnum (2,3MB)
- Matrix a Matrix Nano (1,5MB)
- GPS240 (2,6MB)
- Dynafix (1,8MB)
- Delphin and Delphin Big (1,6MB)



[Click on the picture to download full catalog \(7,4MB\)](#)